

# What's new + what's coming!



# Easier than ever to create and deliver engaging lessons right in Nearpod

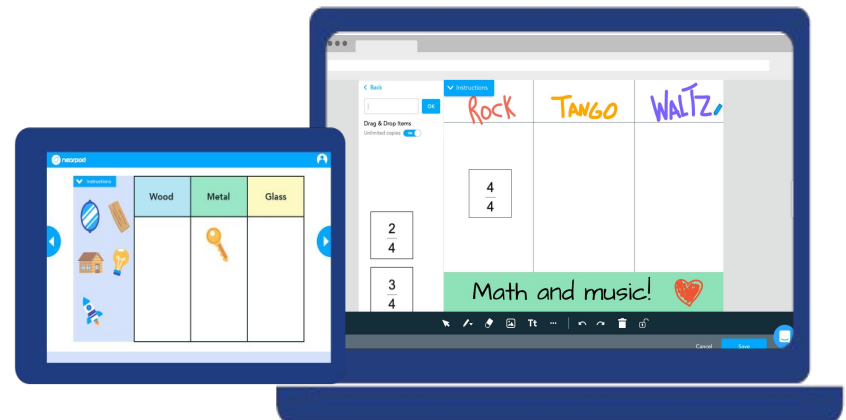


## What's new

- **Slide Editor:** easier content creation within Nearpod
- **Live to Student-Paced mode:** instructional flexibility
- **Drag & Drop:** Draggable activity added to Nearpod
- **Collaborate Board:** Enhancements including threading and categories
- **Time to Climb:** Access new controls, instructional features, and data
- **Teacher Dashboard:** More flexible teacher modeling and Front of Class instruction

## What's coming

- **Slide Editor:** Enhanced functionality and easier to use
- **Toolbar:** Drawing, rich text, math formulas, lines and shapes on favorite activities like Draw-it, Drag & Drop (*ongoing project/release*)
- **Simplified Lesson Controls**



# Content Creation within Nearpod with Slide Editor

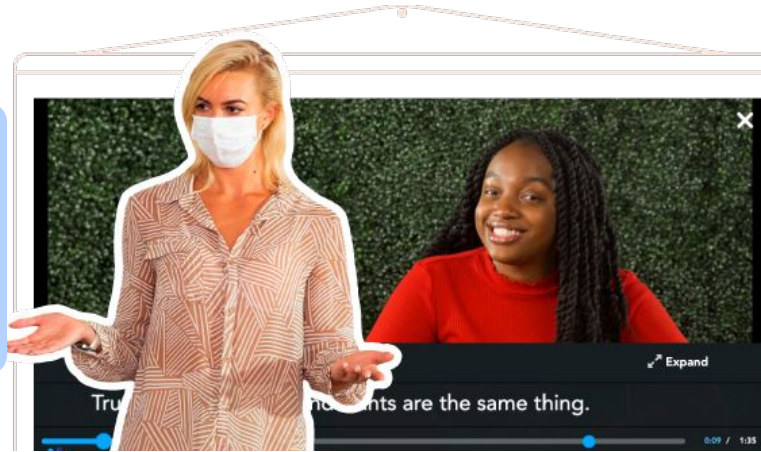
## Learn more [here](#).

- Customize themes, font, and colors
- Add hyperlinks and math equations
  - Convert slides into *Draw It* in one click
- Upload your videos or add a YouTube video
  - Add Audio as an additional learning support
  - Text readable by Nearpod's [Microsoft Immersive Reader](#) integration

The screenshot shows the Nearpod Slide Editor interface. At the top, the Nearpod logo is on the left. The main toolbar contains several icons: a refresh icon, a undo icon, a text icon, a dropdown menu labeled 'Order', a dropdown menu labeled 'Layout', a circular icon, a picture icon, a grid icon, a video icon, a speaker icon, and a GIF icon. Below the toolbar, a central panel displays six slide layout options: 'Blank', 'Title', 'Title and subtitle', 'Title and paragraph', 'Title with two columns', and 'Big title'. To the left of this panel is a floating menu with 'Send to back' and 'Bring to front' options. To the right is another floating menu with 'Add an image', 'Set slide background', 'Add video', 'Add Audio', and 'Record Audio' options. Six yellow circles with numbers 1 through 6 are placed over the interface to highlight specific features: 1 is over the 'Order' dropdown, 2 is over the 'Layout' dropdown, 3 is over the circular icon, 4 is over the 'Add an image' option, 5 is over the 'Add video' option, and 6 is over the 'Add Audio' option.

# Instructional flexibility with Live to Student-Paced mode

Educators can easily switch between synchronous and asynchronous modes within a single lesson as many times as needed.



Learners can work at their own pace during the switch to Student-Paced mode for the rest of the lesson or for a specific group of slides.

**With this mode, educators can:**

- differentiate for learner needs
- manage instructional time limitations
- incorporate group work via virtual or in-person breakout sessions



# How to use Live to Student-Paced & Back mode

---

Click on the video below to watch a 2-3 min demo.

Learn more [here](#).



# Drag & Drop to demonstrate knowledge through visuals



Click on the video below to watch a 2-3 min overview.



## Learners

- respond to prompts to categorize, sequence, label, and solve problems by moving draggable images or text.

## Educators

- assess gaps in concept alignment by reviewing student responses.
- In Live Lessons, educators can immediately modify instruction to address misalignment.

Learn more [here](#).

# Drag & Drop process and ideas

Click on the video below to watch the 2-3 min demo.



## Process

- Upload or apply a premade background image.
- Add draggable images or text to the answer key.

## Assessment Ideas

Build activities with variable levels of rigor

- Label images
- Sequence a timeline or procedure
- Categorize an issue by priority
- Demonstrate problem analysis
- Create a concept map
- Solve equations
- Locate information

# Drag & Drop examples

[Back](#)

12pt **B** *I* U ~~S~~ A Z X Y  $\Omega$  ✓

Drag each important date or key event in the formation of the Union to the correct location on the timeline.

Please enter text up to 1,000 characters

[Instructions](#)

The Declaration of Independence

1777

1787

The Federalist Papers

1791

**Drag & Drop Items**  
Unlimited copies

- The Bill of Rights
- 1788
- US Constitution
- 1776
- Articles of Confederation

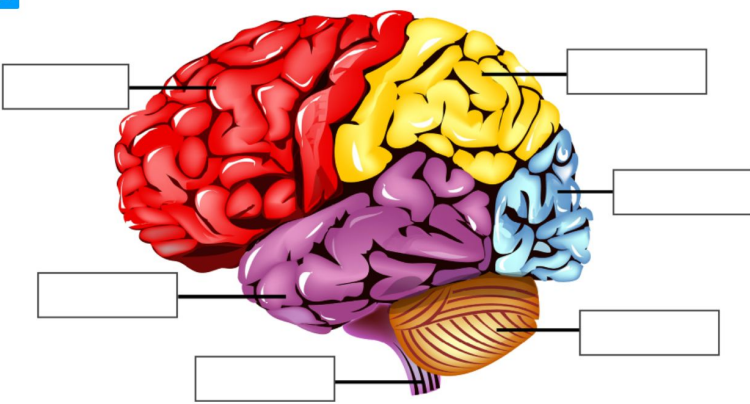
[Back](#)

12pt **B** *I* U ~~S~~ A Z X Y  $\Omega$  ✓

Drag the label to the correct part of the brain.

Please enter text up to 1,000 characters

[Instructions](#)



**Drag & Drop Items**  
Unlimited copies

- Cerebellum
- Occipital Lobe
- Temporal Lobe
- Spinal Cord
- Frontal Lobe
- Parietal Lobe



# Collaborate to interact



nearpod

What is an example of an ecosystem?

Instructions

Dylan

Jack  
Desert

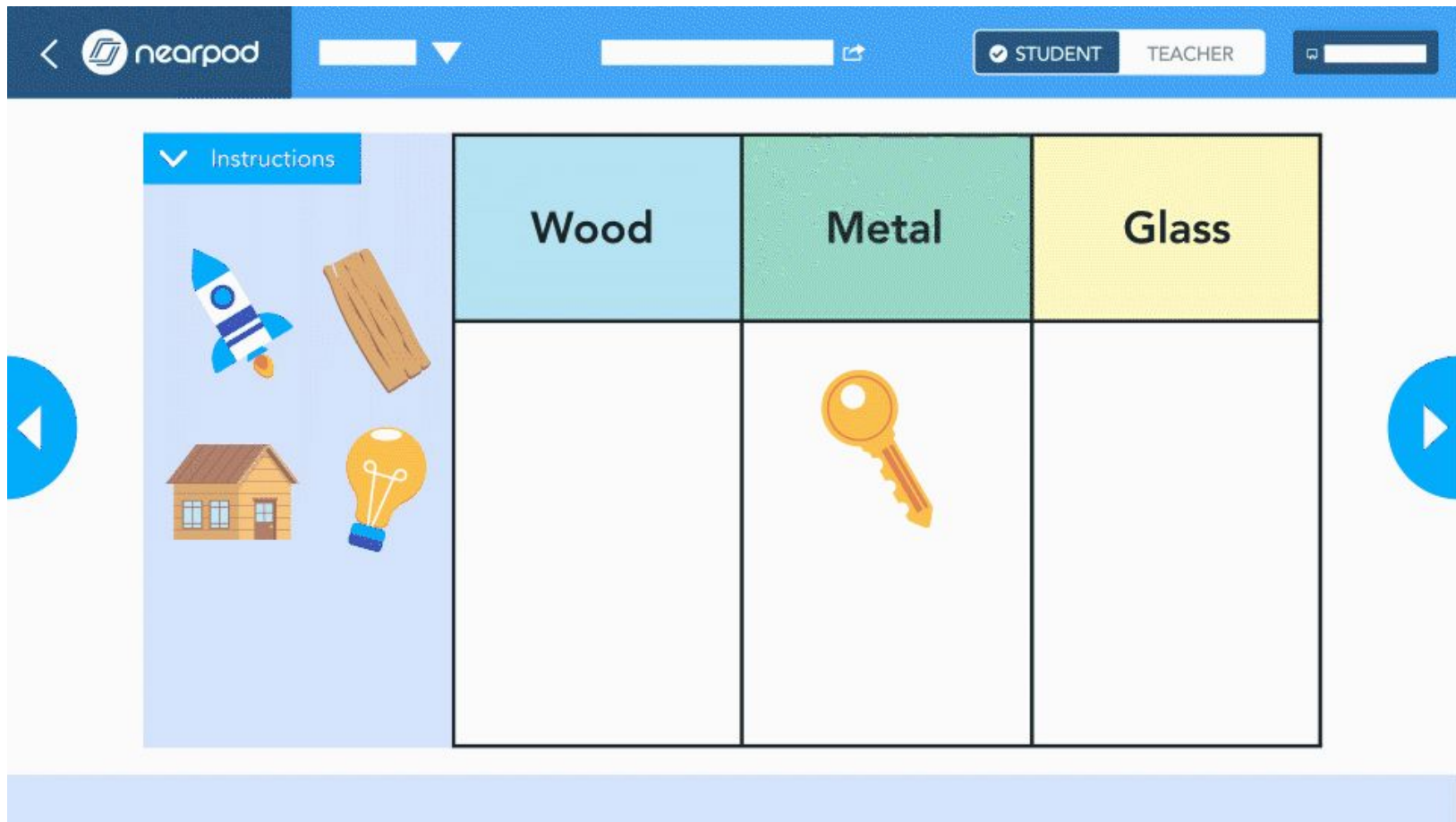
Sasha

Allison

Image Video Audio GIF

Threading, categories, media options, and more controls

# Live Lesson Dashboard pivoting



Navigate to your Profile, select Settings, and toggle off the default to revert to the Teacher view display.

## Live Participation Settings

Customize what your students can do when using Nearpod in Live Participation mode.



Default to Student View

Turn off to set Teacher View as default and see results of the selected activity.

[Learn more](#)

# More options with Time to Climb



nearpod

### Time to Climb Settings

Randomize answers

Pause between questions

Play sound on all students devices

Controls, actionable data, and more themes.

# Combine Interactive Features to Drive Engagement

---

## Live Problem Solving

1. Gather learner responses with a [Collaborate Board](#)
2. Ask learners to upvote (heart) the top 5 responses
3. Use the [Annotate](#) feature to examine the pros and cons of each of the 5 responses on a blank table slide. Encourage learners to verbalize their ideas.
4. Ask learners to screenshot the final table as annotations do not save to Student Notes or the lesson.

## Promote Teamwork

1. Divide learners into groups.
2. Assign each group a series of slides featuring [Drag & Drop](#) activities.
3. Utilize the [Live to Student-Paced](#) mode and give the groups a set amount of time to submit their agreed-upon responses.
4. Have each group select a group leader to explain their selections to the class.

### Nearpodding Tips:

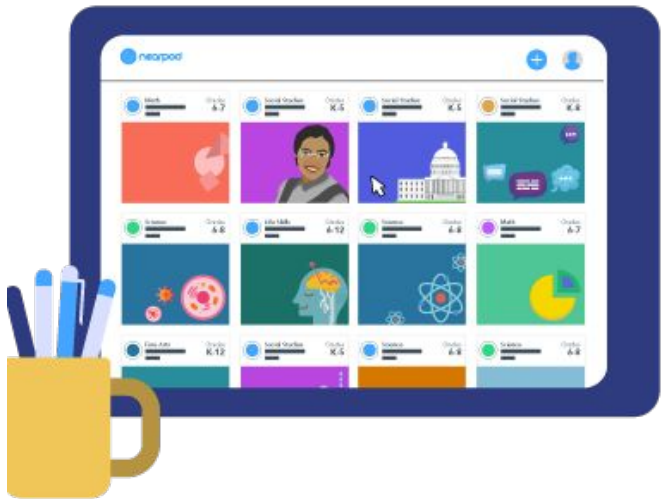
Review Lesson Settings under your Profile.  
Remind learners to activate Student Notes.  
Bookmark [First Launch](#) for quick guide resources.

# Less time planning when 22,000+ lessons, video, and activities are one click away

## What's new (ongoing)

Expanded Nearpod Library: 22,000+ resources

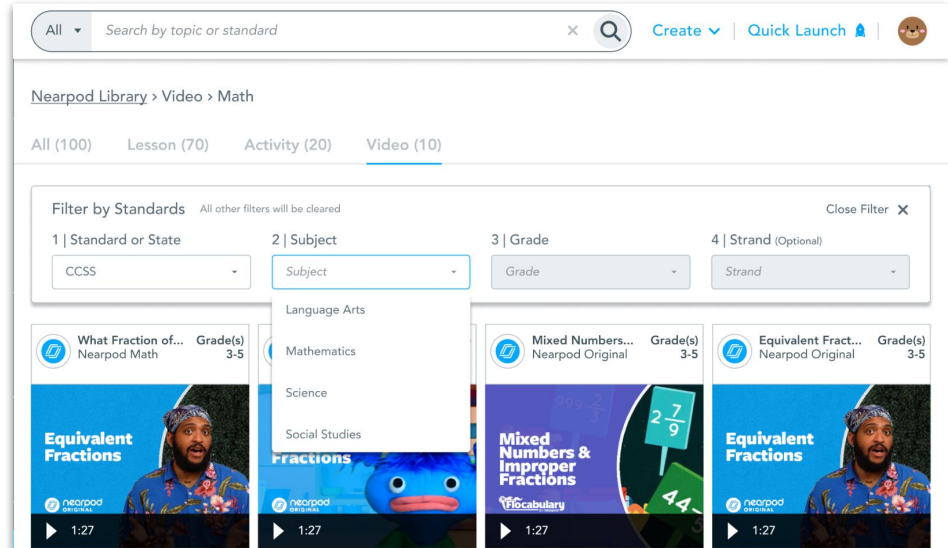
- 8,500 Interactive Lessons
- 10,200 Interactive Videos
- 3,300 Games and Activities



## What's coming

Enhanced Search: Centralized search for all libraries

- Search the Lesson Library, Programs, Collections, and My Library at once
- Faster, better results with new algorithm
- Predictive suggestions appear as you type
- Completely redesigned filtering experience



# Better insight to student understanding with updated reports



[Back to all reports](#) Classic report

## First Hour ELA - Lesson 1

25 Slides | 23 Students | Live Participation - QIVJSL Launched: Nov 11, 2021 @10:53 am

Summary **Activity Reports** Student Reports

Activities: Video: The Transcontinental Railroad

Video: The Transcontinental Railroad 80% 100%  
Slide 5 Avg Score Participation

Multiple Choice Question  
How much do you know about the transcontinental railroad? 85% Correct

Answer Distribution

ANSWER	% CHOSEN
<span>✗</span> A. Not much	5%
<span>✓</span> B. A lot	85%
<span>✗</span> C. Far far away, behind the word mountains, far from the countr...	5%
<span>—</span> No Answer	5%

STUDENT ANSWER

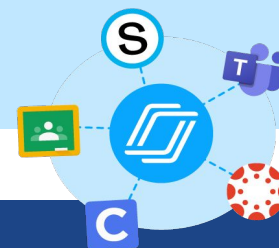
Albertha O'Keefe	<span>✓</span> B. A lot
Allie Farrell	<span>✗</span> C. Far far away, behind the word mountains, far from the countries Vokalia and Consonantia, there live the blind texts. Separated they live in Bookmarksgrove right at the coast of the Semantics, a large language ocean. A small river named Duden flows by their place and supplies it with the necessary regellialia. It is a paradisematic country, in which roasted parts of sentences fly into your mouth. Even the all-powerful Pointing has no control about the blind texts it is an almost unorthographic lif
Angus Predovic	<span>—</span> No answer
Beatrice Hahn	<span>✓</span> B. A lot
Belle Walker-Johnston	<span>✓</span> B. A lot

## What's coming

### Updated Reports

- Completely reimagined reporting interface
- Meaningful data visualizations
- Quickly pinpoint common misconceptions and trouble spots
- New Student Report allows to check understanding by student across all activities in the lesson (*coming this fall*)

# Simplifying the edtech ecosystem with top industry partners and integrations



## What's new:

- **Renaissance Learning:** New family of lessons that integrate Freckle, myON and Lalilo



Google  
Classroom



## What's coming:

- **Microsoft teams:** Assign and deliver Nearpods without ever leaving Teams
- **Google Classroom add-on:** Assign, deliver and grade Nearpods without ever leaving Google Classroom
- **Star Assessment:** Assessment-driven Nearpod content recommendations within Star

**Thank you for  
your time!**