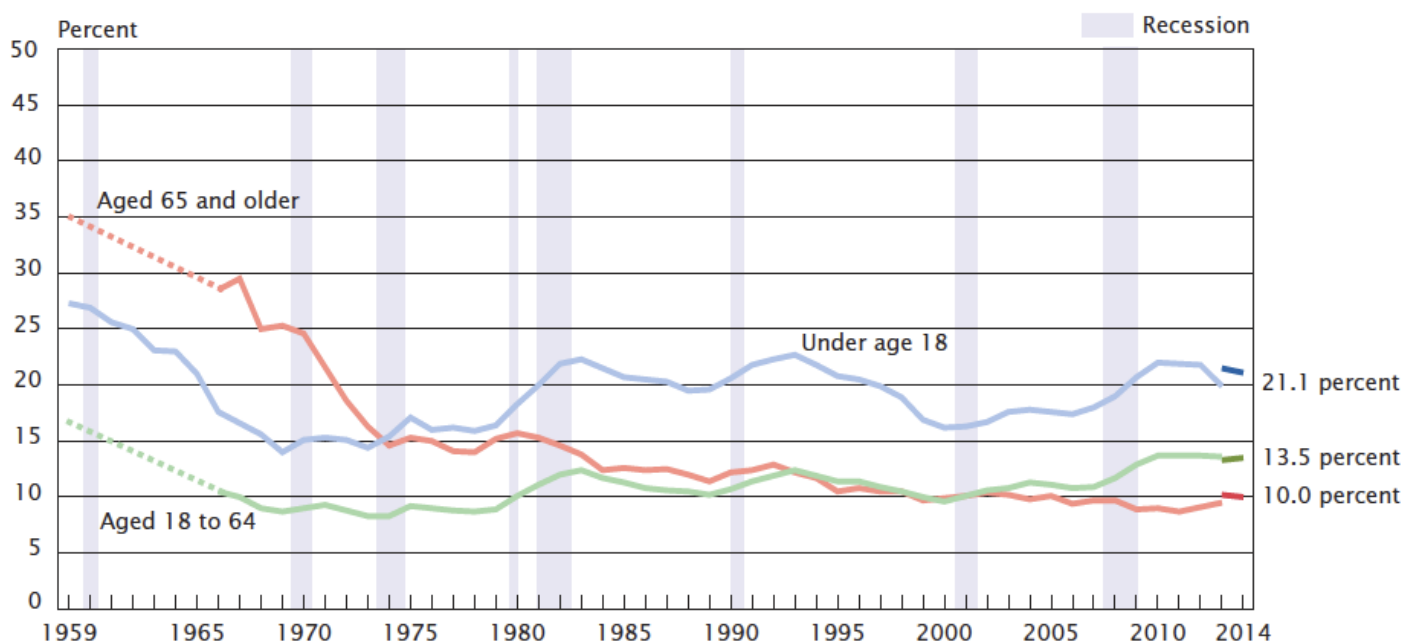


Poverty Rates by Age: 1959 to 2014

Name: _____ Date: _____

Poverty Rates by Age: 1959 to 2014



Note: The 2013 data reflect the implementation of the redesigned income questions. See Appendix D for more information. The data points are placed at the midpoints of the respective years. Data for people aged 18 to 64 and 65 and older are not available from 1960 to 1965. For information on recessions, see Appendix A. For information on confidentiality protection, sampling error, nonsampling error, and definitions, see <ftp://ftp2.census.gov/programs-surveys/cps/techdocs/cpsmar15.pdf>. Source: U.S. Census Bureau, Current Population Survey, 1960 to 2015 Annual Social and Economic Supplements.

Source: DeNavas-Walt, C., & Proctor, B. D. (2015). Income and poverty in the United States: 2014 [Chart]. Retrieved from: <https://www.census.gov/content/dam/Census/library/publications/2015/demo/p60-252.pdf>