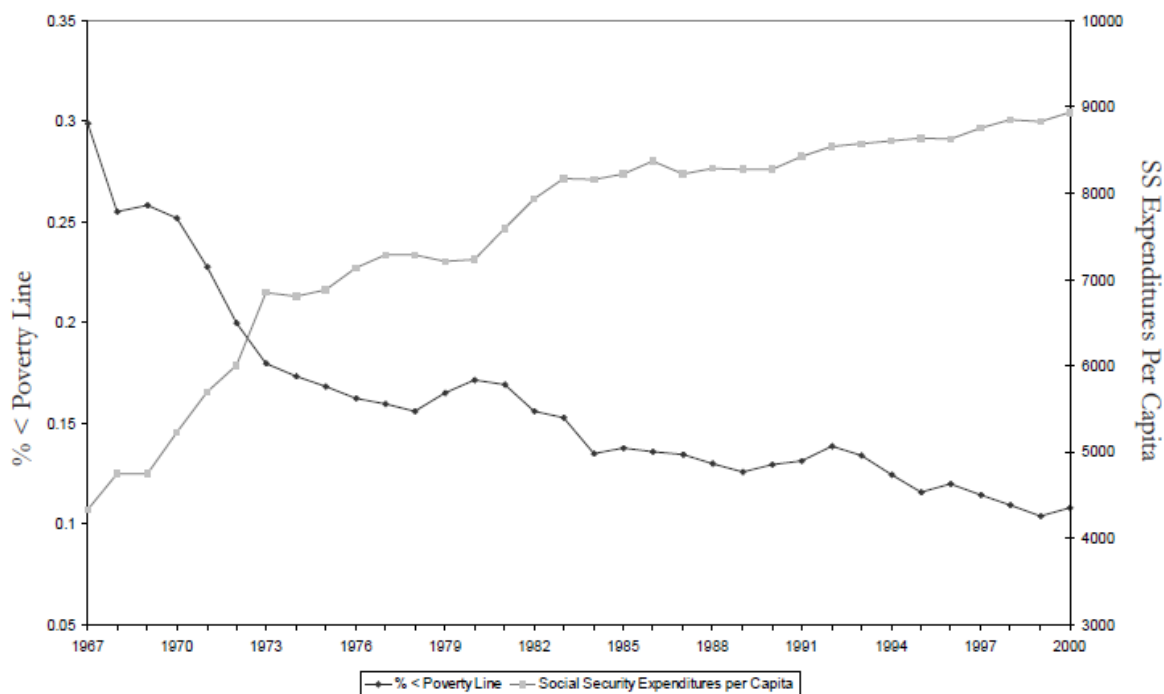


Elderly Poverty and Social Security Expenditures Over Time

Name: _____ Date: _____

Directions: Answer the following questions in complete sentences.

Figure 1: Elderly Poverty and Social Security Expenditures Over Time



Source: National Bureau of Economic Research. (2004). Elderly poverty and Social Security expenditures over time [Chart]. Retrieved from <http://www.nber.org/aginghealth/summer04/summer04.pdf>

Questions

1. What information does the graph provide?
2. Describe the relationship between the two lines.
3. From the information provided in this graph, what can we infer about Social Security expenditures and the poverty rate among the elderly?
4. From the information provided in this graph, what do you hypothesize an extension of the graph to 2025 would look like? Why?